

Rainbow CRM Bridge



Rainbow™

Legal Notice

Alcatel-Lucent Enterprise, ALE International and the Alcatel-Lucent Enterprise logo are trademarks of ALE International. All other trademarks are the property of their respective owners. The information presented is subject to change without notice. ALE International assumes no responsibility for inaccuracies contained herein.

Copyright © 2023 ALE International - All rights reserved.

Index

1	DOCUMENT HISTORY	4
2	INTRODUCTION	5
3	GETTING STARTED	6
3.1	Installing Browser Extension	6
3.2	Configuring Browser Extension for the first time	7
3.3	Log in Freshsales CRM	8
3.4	Browser Extension – SSO Configuration	9
4	RAINBOW SUBSCRIPTION & SUPPORTED PBXS	12
5	ICON GLOSSARY	13
6	TROUBLESHOOTING	14

1 Document History

Edition	Date	Changes / Comments / Details
01	12/10/2023	Initial Deployment Guide created

2 Introduction

Rainbow CRM Bridge acts as a middleware that connects the third-party CRM, Freshsales CRM, with a range of ALE and OEM telephone systems. It is hosted in the ALE Cloud and works as a browser extension of the CRM.

A browser extension creates a seamless user experience that improves employee productivity and customer service at the same time.

It fetches Rainbow contact information and provides additional functionality such as text conversations, fetching CRM contact information on incoming calls, dialing out to CRM contact phone numbers and call history.

3 Getting Started

In order to use Rainbow CRM Bridge on your computer, you have to install and configure a browser extension in Google Chrome.

Please follow the process described in the below sections to install and configure the extension.

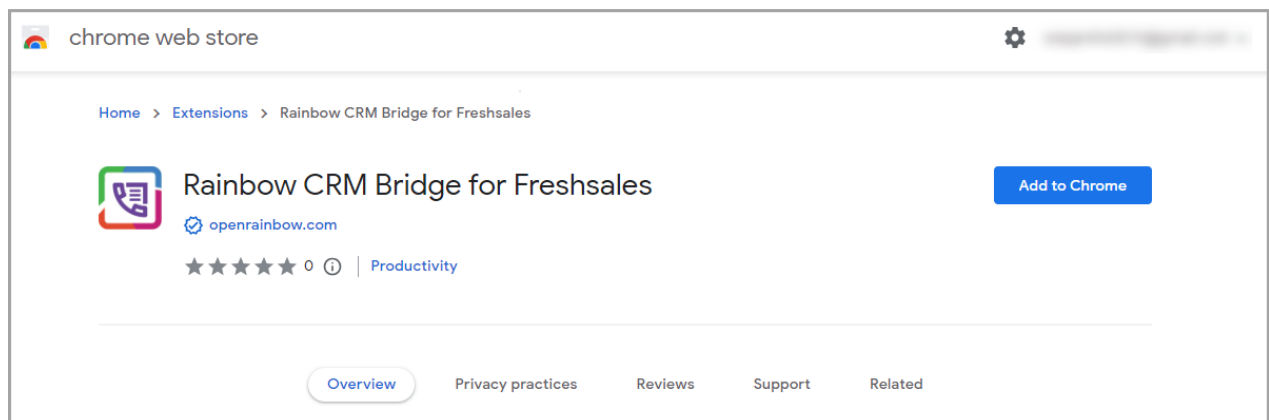
Note: Please perform the below-described process by using Google Chrome browser.

3.1 Installing Browser Extension

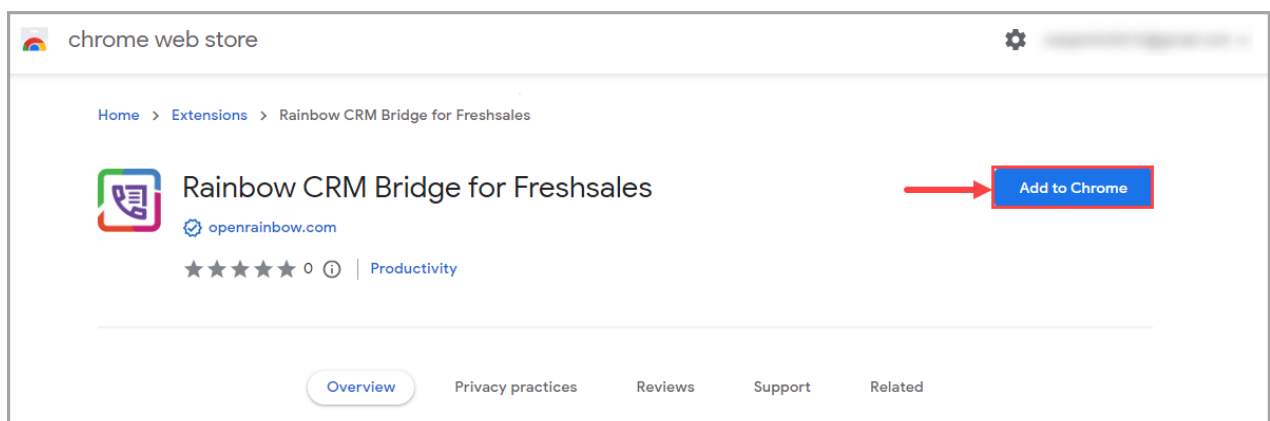
1. Use the below web address to access **Rainbow CRM Bridge for Freshsales** extension in Chrome Web store:

<https://chrome.google.com/webstore/detail/rainbow-crm-bridge-for-fr/ajljihpkihieilmgbnbmijbeikcalgc>

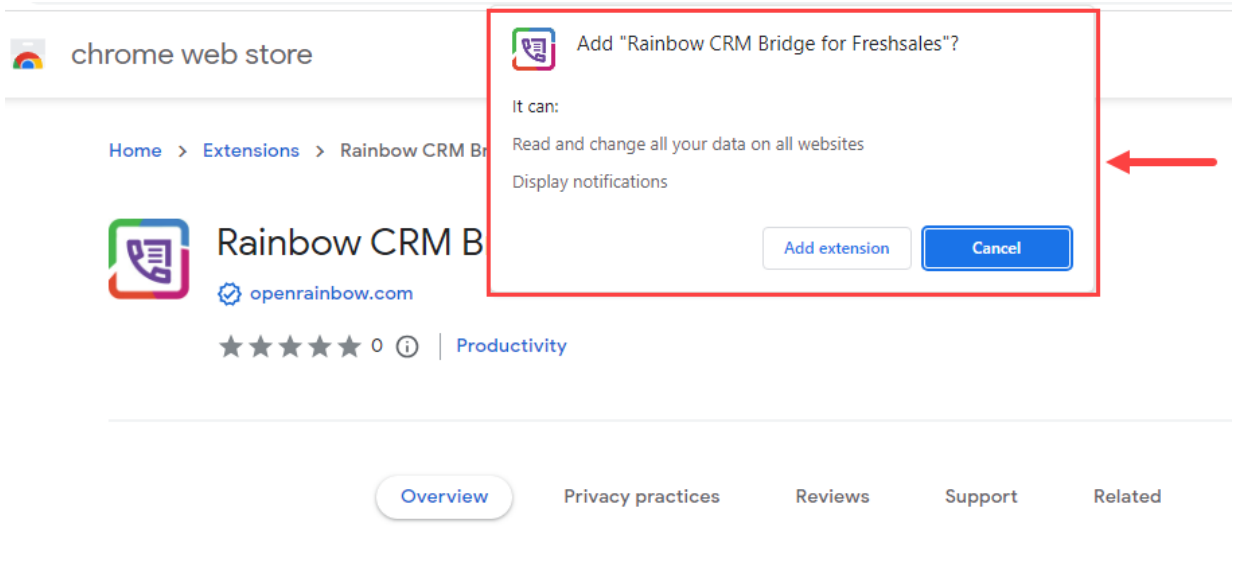
Following page is displayed:



2. Click on **Add to Chrome** button as highlighted below.

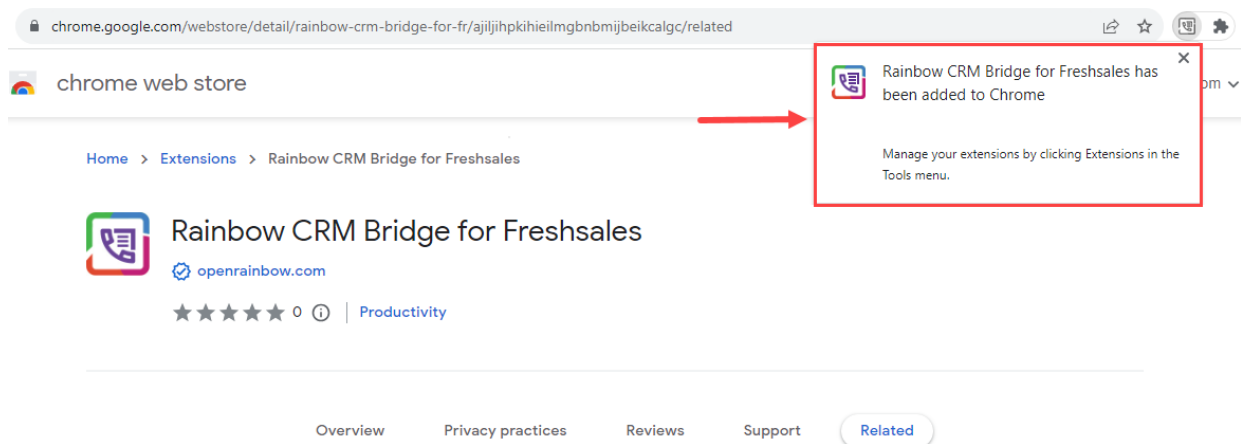


Following pop-up is displayed:




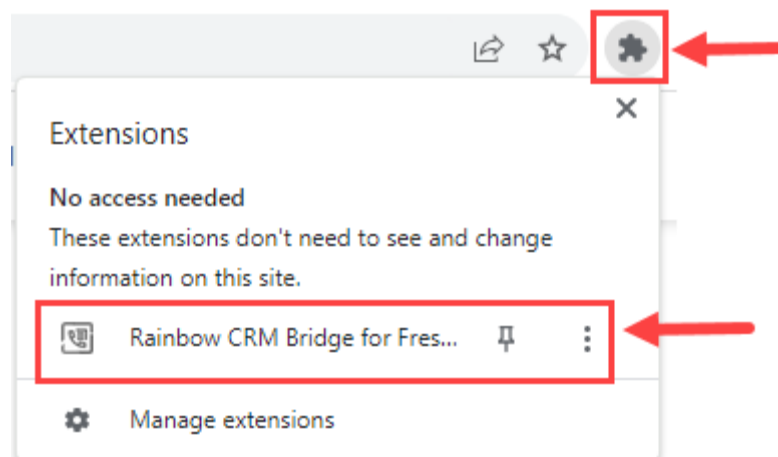
3. Click on **Add Extension** button to start the installation process.



Following pop-up message is displayed once installation is complete:

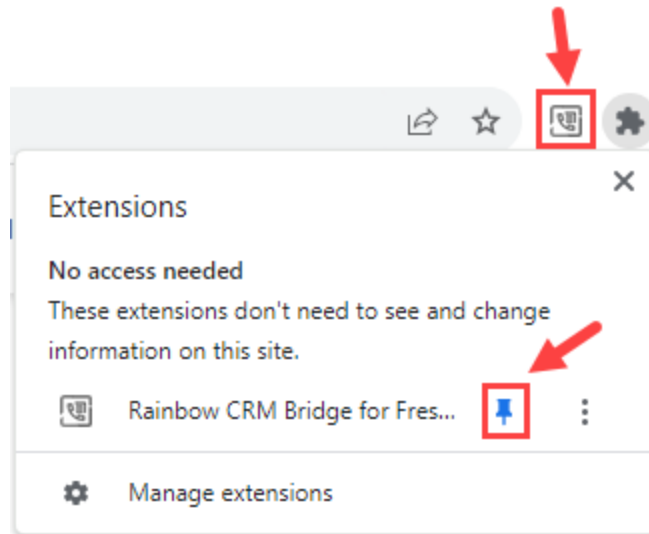


3.2 Configuring Browser Extension for the first time

1. Click on the  icon in the top right corner of Google Chrome. **Rainbow CRM Bridge for Freshsales** extension is displayed in the drop-down menu as highlighted below:





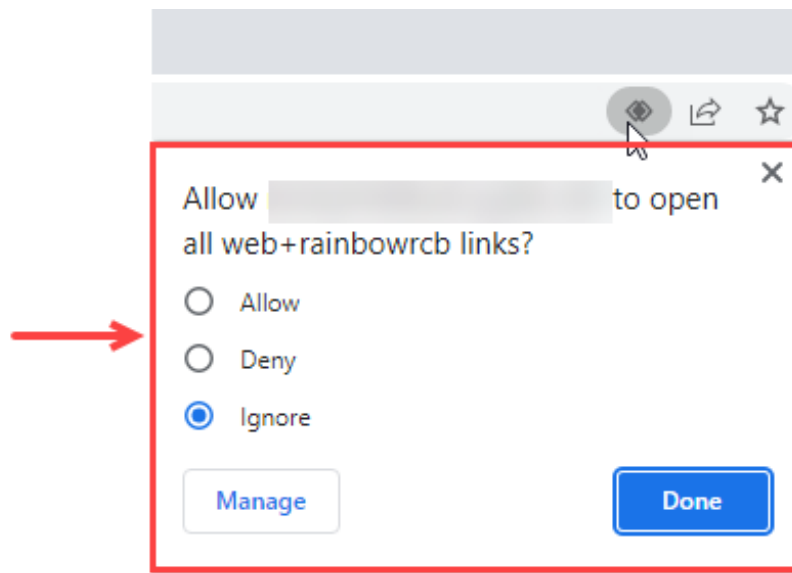
- Click on the  icon displayed next to the extension. This action displays the extension next to the address bar in the form  of icon as highlighted below:



Note: Rainbow CRM Bridge for Freshsales extension will function only when the agent is logged in to Freshsales CRM.

3.3 Log in Freshsales CRM

- Please Log in to Freshsales CRM.
- An icon  shows up in the in the address bar of Google Chrome once you are successfully logged into Freshsales CRM. When you click on the  icon, following drop down menu is displayed:



- Select **Allow** option and then click on **Done** button as shown below:

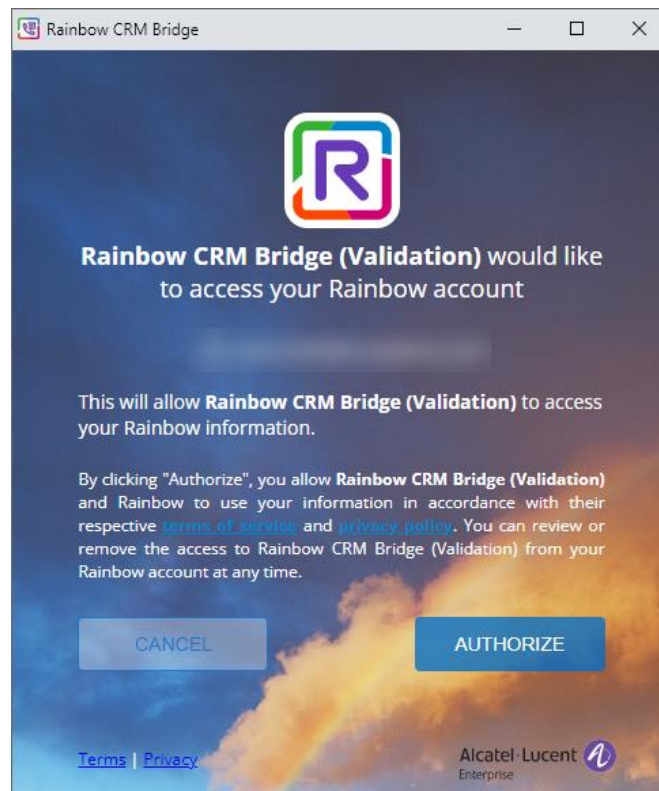


4. Press **Ctrl+F5** from your keyboard to refresh the browser.

3.4 Browser Extension – SSO Configuration

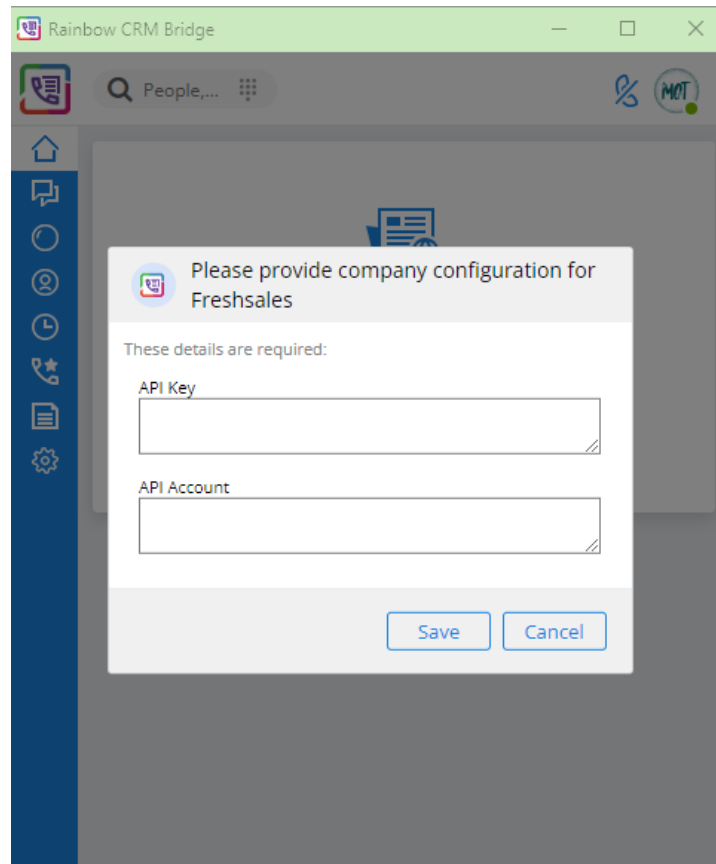
1. Please open **Rainbow CRM Bridge for Freshsales** extension by clicking on the  icon available next to the address bar.

Following window is displayed when you open the extension for the first time:



2. Click on the **Authorize** button and you will be logged into the **Rainbow CRM Bridge**.

If Freshsales API has not been configured then following pop-up is displayed:

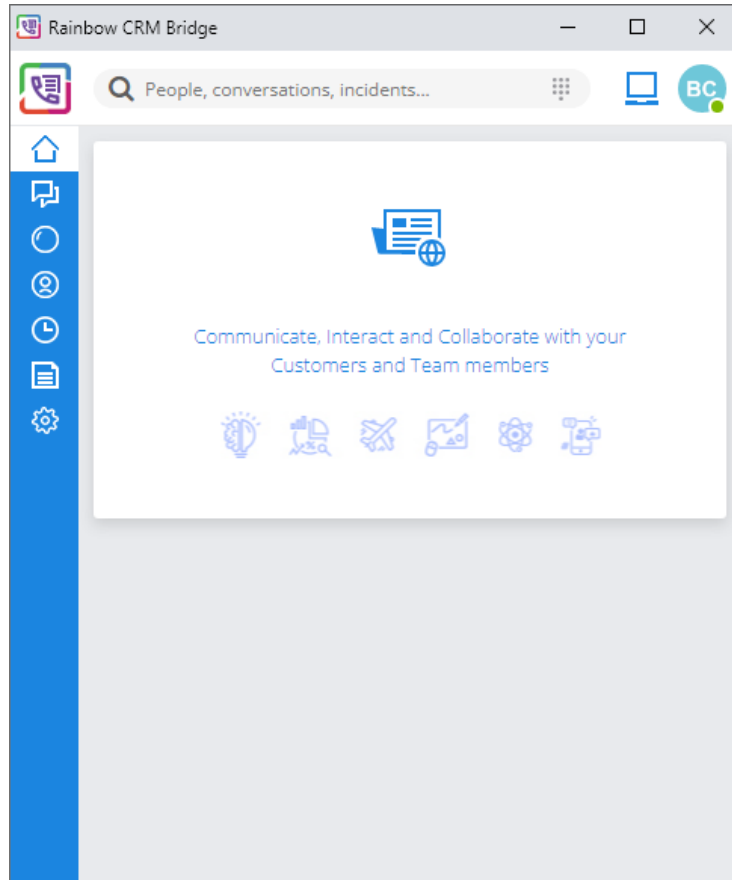


Following information has to be provided in the above pop-up:

- **API Key:** Enter API Key received from Freshsales API
- **API Account:** Enter the account information received from Freshsales API

Once the necessary information is entered, Click on the Save button.

Once the user is logged in, following screen is displayed in Rainbow CRM bridge extension:



4 Rainbow Subscription & Supported PBXs

Before integrating Rainbow CRM Bridge with Freshsales CRM, you must ensure that following configuration requirements related to telephone system are fulfilled. Integration with Freshsales CRM can be achieved without these configurations but they are vital for provisioning of telephony capabilities in Rainbow CRM Bridge.

Rainbow CRM Bridge supports all available “Server Type” options such as OmniPCX Office (OXO) Connect, OmniPCX Enterprise (OXE) and 3rd Party PBXs. All supported telephone systems along with their supported versions are listed in the below table:

Telephone Systems	Supported Versions
OmniPCX Enterprise (OXE)	v12 or higher
OmniPCX Office (OXO) Connect	R3.x or higher
CISCO Unified Communication Manager (CUCM)	v9.x, 10.x, 11.x, 12.x
Mitel MiVoice	MiVoice 250
NEC	iS3000, iS4000
Asterisk	v11.21.1,v11.21.2,v11.21.3, v16.x, v17.x
OpenScope	OpenScope 4000

'Activate webRTC Gateway' option must be enabled if you intend to use Rainbow CRM Bridge application for VOIP calls. For more information on this, please refer to the following links:

<https://support.openrainbow.com/hc/en-us/articles/360017561039-Manage-a-PBX-Equipment-Associated-to-a-Company>

<https://support.openrainbow.com/hc/en-us/articles/360019337180-WebRTC-gateway-installation-and-configuration-for-third-party-PBX>

For OmniPCX Enterprise and OmniPCX Office Connect, CCCAgent application must be setup. However, for other telephone systems (CUCM, Mitel MiVoice, NEC and Asterisk), Rainbow CTI & Media Bridge application must be setup.

TAPI, CSTA, SIP Trunk and other PBX specific licenses are essential pre-requisite for setting up CCCAgent and Rainbow CTI & Media Bridge application. Please check with your telephone system vendor for licenses status and their activation.

5 Icon Glossary

Below you can see a list of icons (displayed next to Google Chrome address bar) and specific status of Rainbow CRM Bridge that these icons represent.



- You are not logged into the Freshsales CRM.



- You are logged in Freshsales CRM and should click on the extension to login into the Rainbow CRM Bridge. Same icon is displayed when you are logged into the Rainbow CRM Bridge.

6 Troubleshooting

In order to avoid the “Blocked State” of the CCD agent when the distant caller hangs up, the timer 384 value must be set to 0 (in system/timers) as highlighted below:

```
Review/Modify: Timers
Node Number (reserved) : 1
Instance (reserved) : 1
Timer No. : 384
Timer units : 0
```

enterprise.alcatel-lucent.com

Alcatel-Lucent Enterprise and the Alcatel-Lucent Enterprise logo are trademarks of ALE Holding. To view other trademarks used by affiliated companies of ALE Holding, visit: enterprise.alcatel-lucent.com/trademarks. All other trademarks are the property of their respective owners. The information presented is subject to change without notice. Neither ALE Holding nor any of its affiliates assumes any responsibility for inaccuracies contained herein